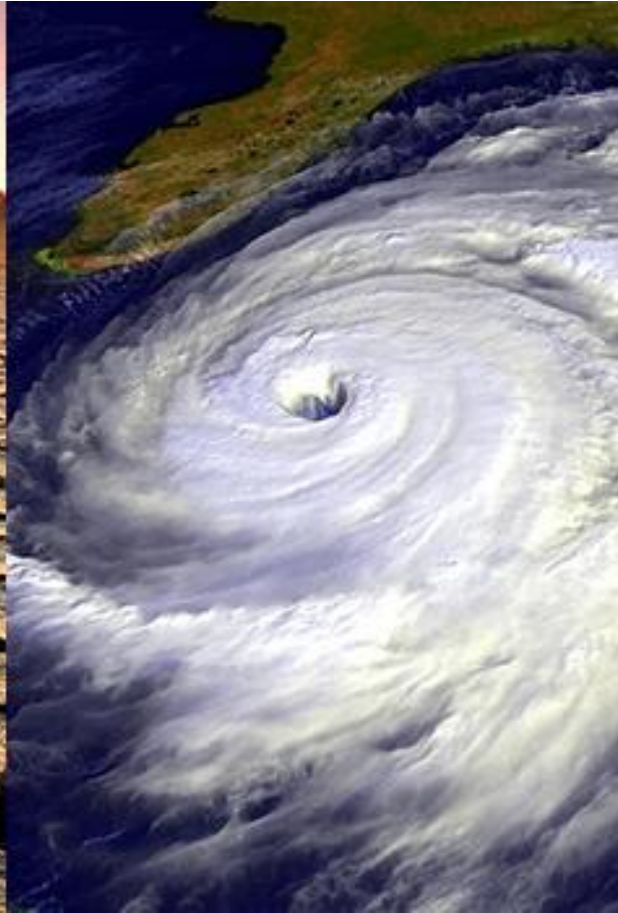


# Ilmastonmuutos ja mitä se tarkoittaa yrityksille

IR DAY 4.10.2022  
Sini Harkki  
Greenpeace Nordic

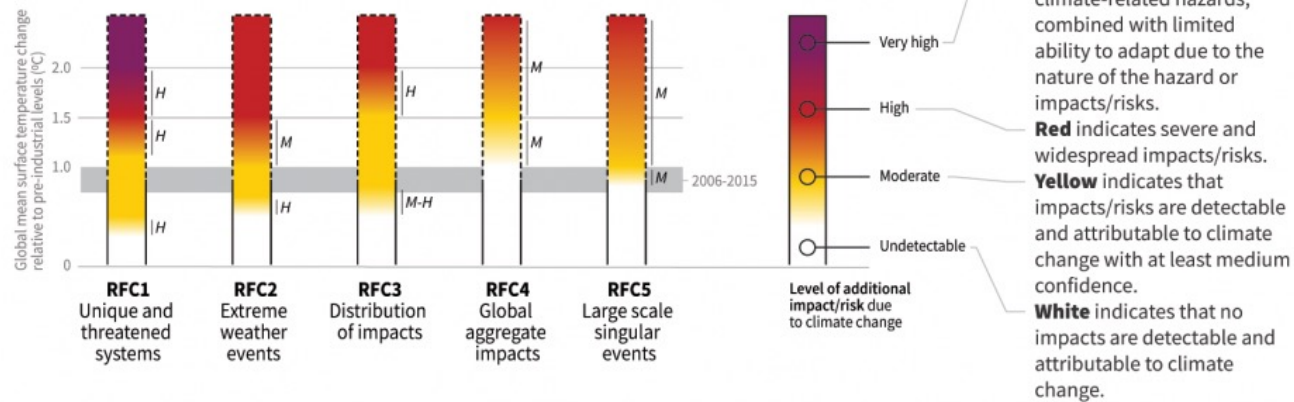


**GREENPEACE**

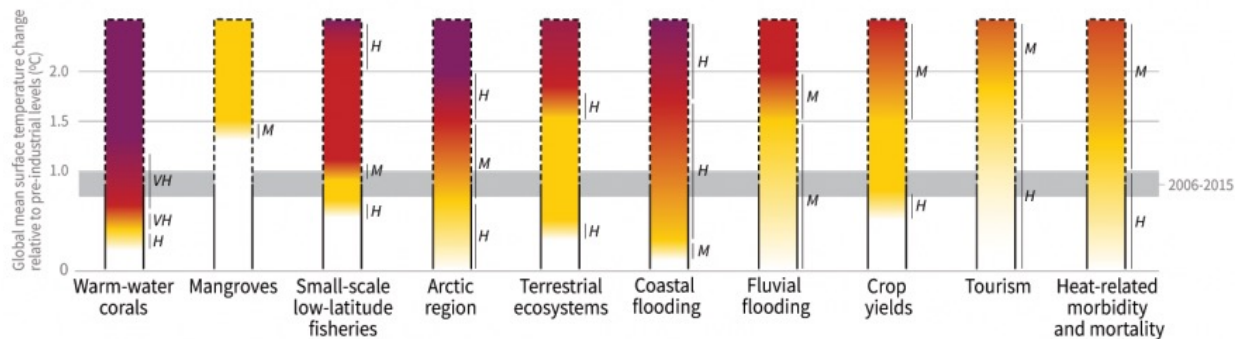
# How the level of global warming affects impacts and/or risks associated with the Reasons for Concern (RFCs) and selected natural, managed and human systems

Five Reasons For Concern (RFCs) illustrate the impacts and risks of different levels of global warming for people, economies and ecosystems across sectors and regions.

## Impacts and risks associated with the Reasons for Concern (RFCs)

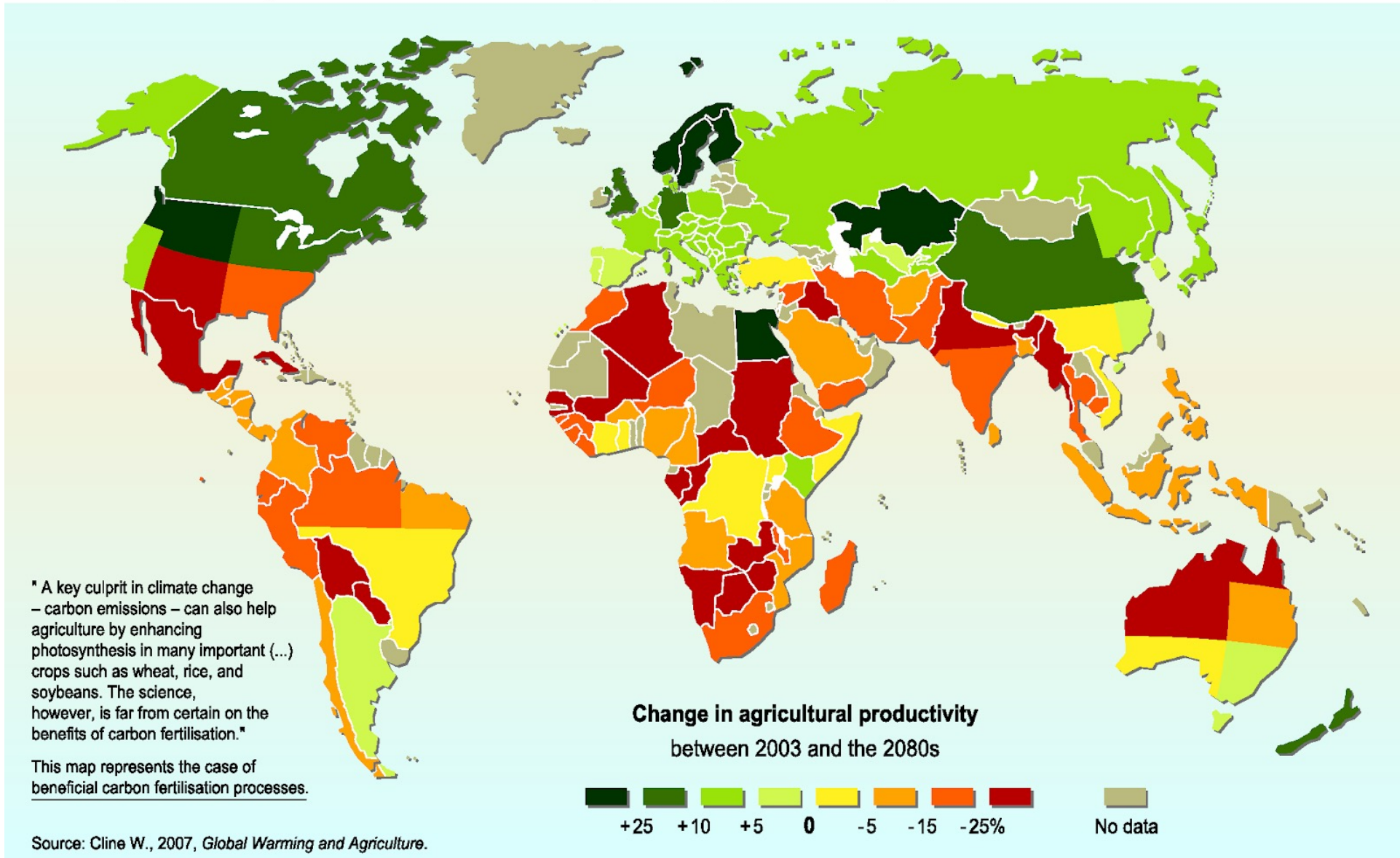


## Impacts and risks for selected natural, managed and human systems



Confidence level for transition: L=Low, M=Medium, H=High and VH=Very high

## Projected impact of climate change on agricultural yields



# Climate crisis: last seven years the hottest on record, 2021 data shows

**Global heating continued unabated with extreme weather rife and greenhouse gases hitting new highs**

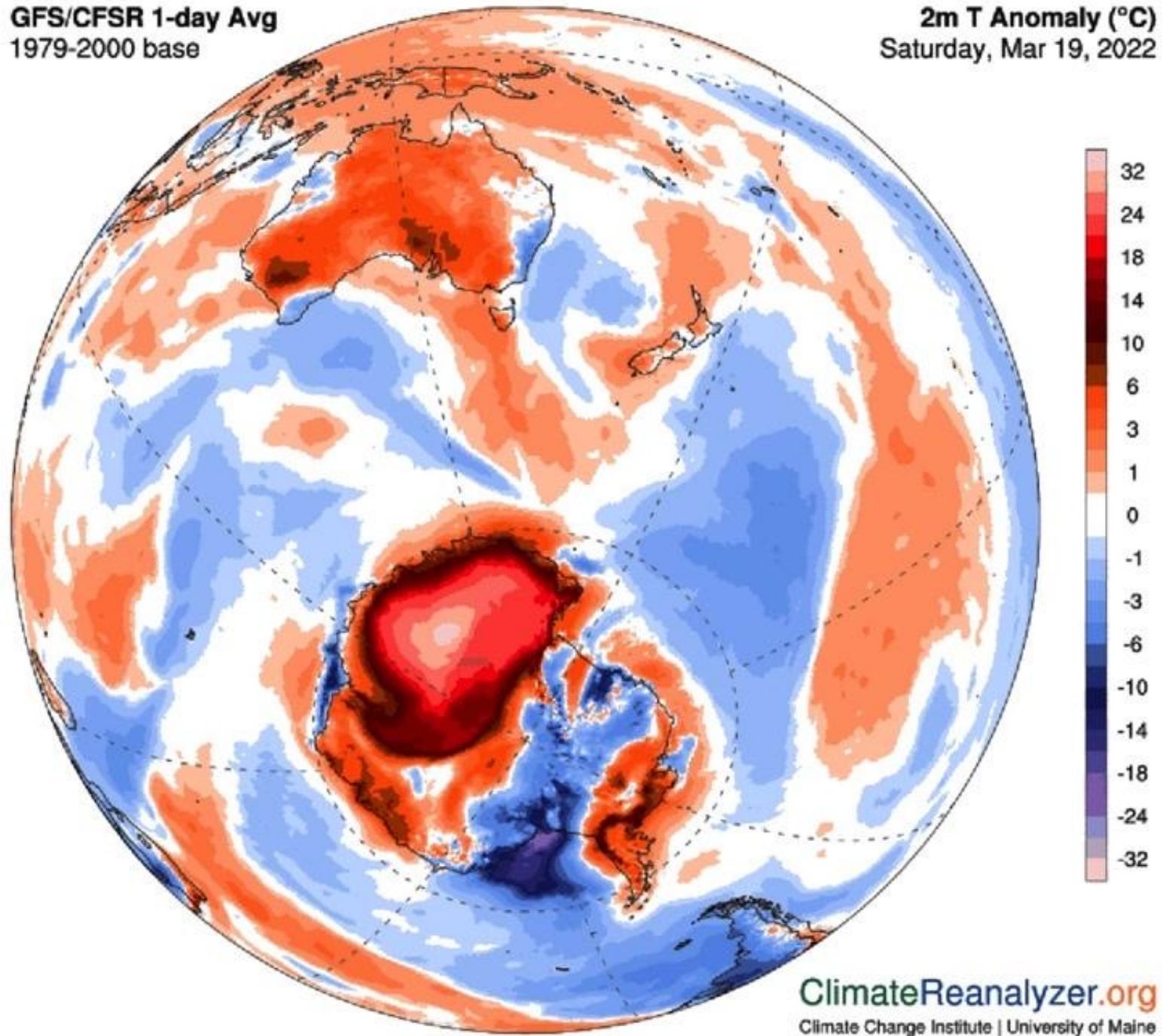


📷 A firefighter sprays water as a house burns in the Dixie wildfire - the second largest in history - in Plumas County, California. Photograph: Josh Edelson/AFP/Getty Images

The last seven years were the world's hottest on record, with the first analysis of global temperature in 2021 showing it was 1.2C above pre-industrial levels.

GFS/CFSR 1-day Avg  
1979-2000 base

2m T Anomaly (°C)  
Saturday, Mar 19, 2022



## **A Powerful Heatwave is Affecting a Large part of Antarctica with Unprecedented Warm Temperatures More than 40 degrees Above Average**

By: Renato R. Colucci

Published: 20/03/2022

Global weather

PLANTS AND FORESTS

14 March 2022 🕒 16:00

# ‘Imminent’ tipping point threatening Europe’s permafrost peatlands







AYESHA TANDON

07.03.2022 | 4:00pm

**TIPPING POINTS**

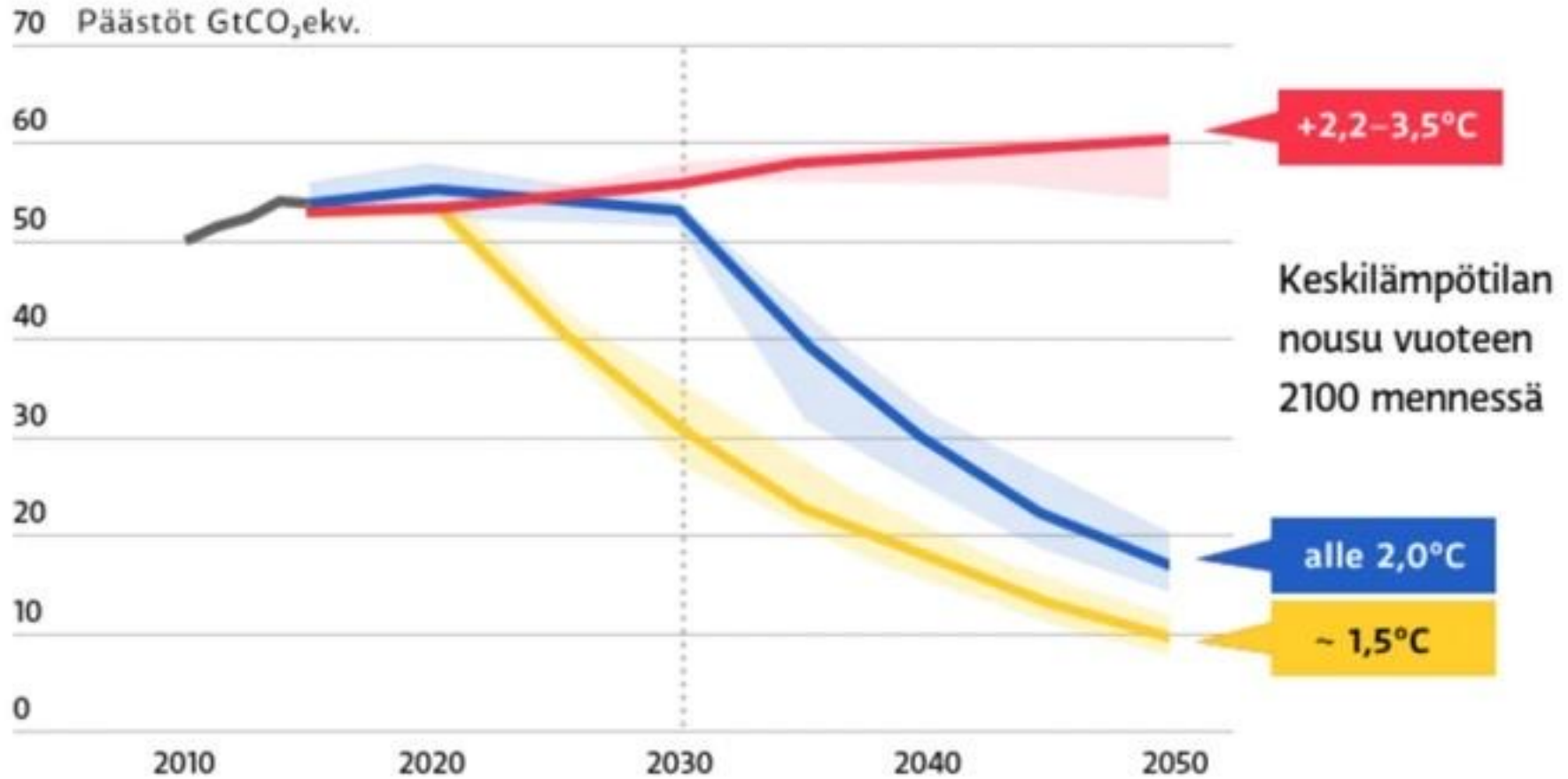
Declining 'resilience' pushing Amazon rainforest towards tipping point

Three-quarters of the Amazon rainforest has lost “resilience” since 2003 – making it more vulnerable to extreme events such as droughts – according to new research.

Scientists have long warned that climate change and human-driven deforestation could push the Amazon rainforest past a “[tipping point](#)”, which would see the dieback of large sections of lush rainforest and a shift to dry savannah. However, modelling studies have been unable to agree on if and when this threshold might be crossed.

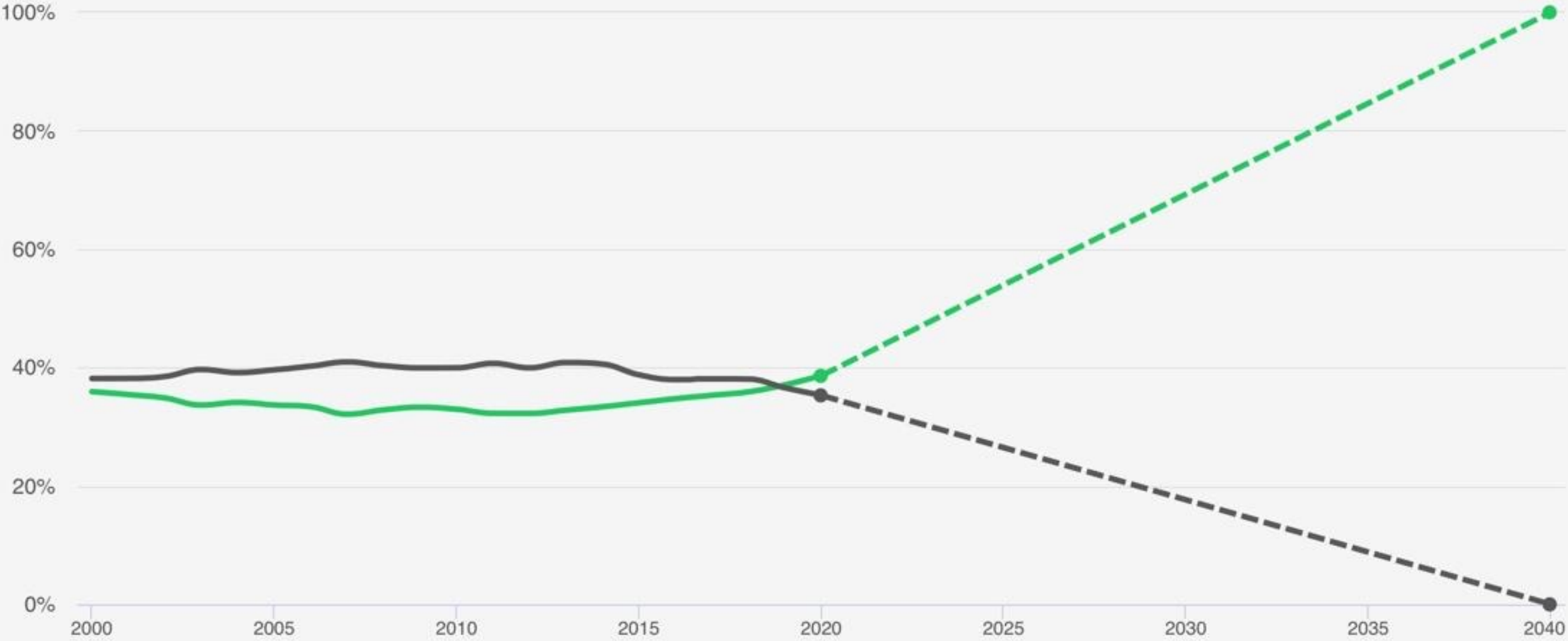
The new study uses observational data to explore how the forest’s “resilience” – a measure of how quickly the forest can recover from a drought or extreme weather event – has changed in recent decades.

# Nykyiset päästövähennystoimet eivät riitä 1,5 asteen tavoitteeseen



- Nykyisten päästöjen kehitys
- Vaatii nopeita vähennyksiä v. 2030 jälkeen verrattuna nykyisiin tavoitteisiin
- Vaatii välittömiä ja suuria vähennyksiä

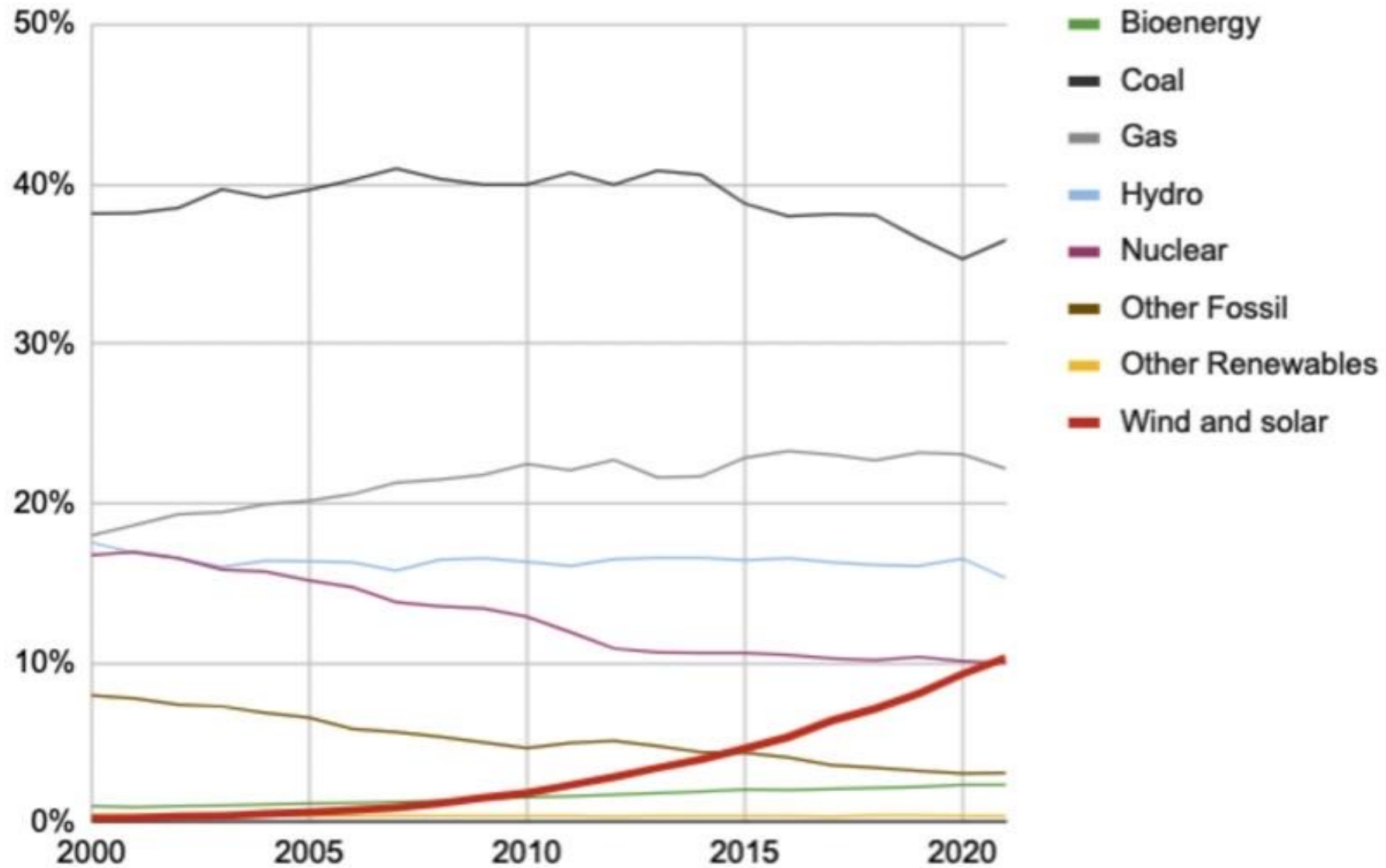
# Coal and **clean** share of world electricity generation



Source: Ember electricity generation data, IEA Net Zero by 2050; Clean includes: Wind, solar, hydro, nuclear, other renewables and bioenergy

# Wind and solar now generate 10% of the world's electricity

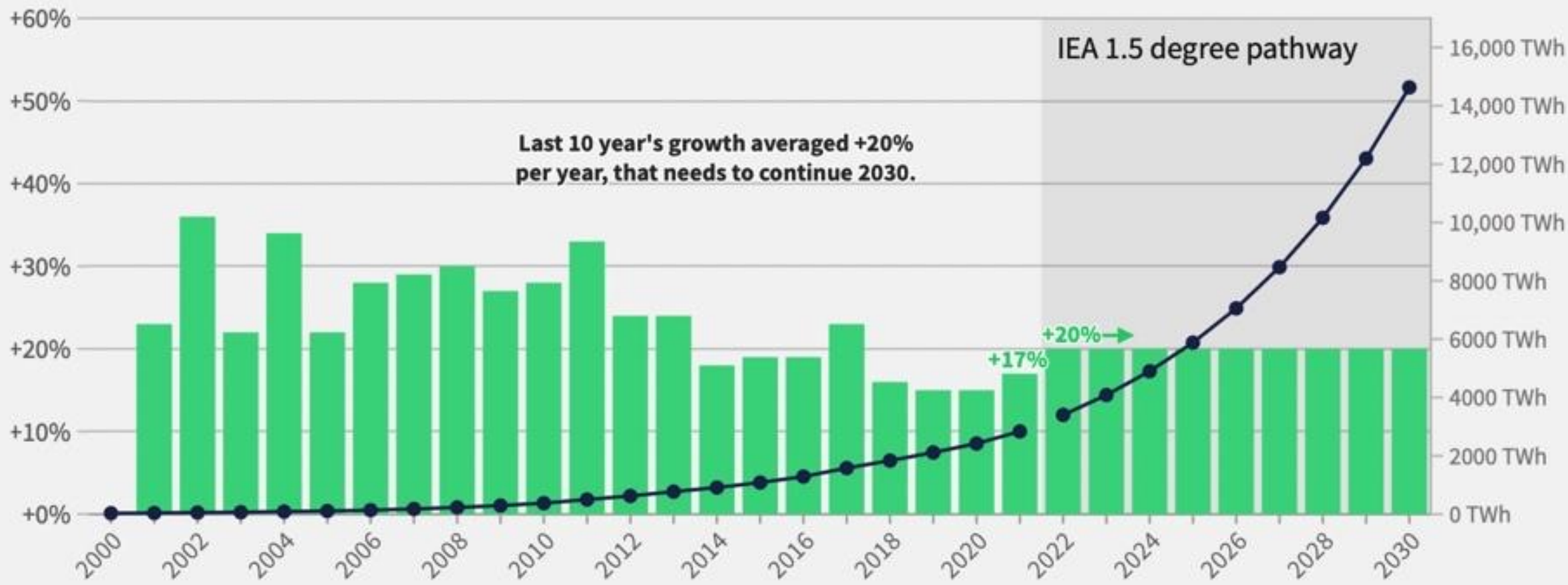
Share of electricity generation by fuel, %



# Wind and solar need to maintain high growth rates

Global electricity generation from wind and solar

■ Year-on-year growth (%) ■ Generation (Terawatt hours)



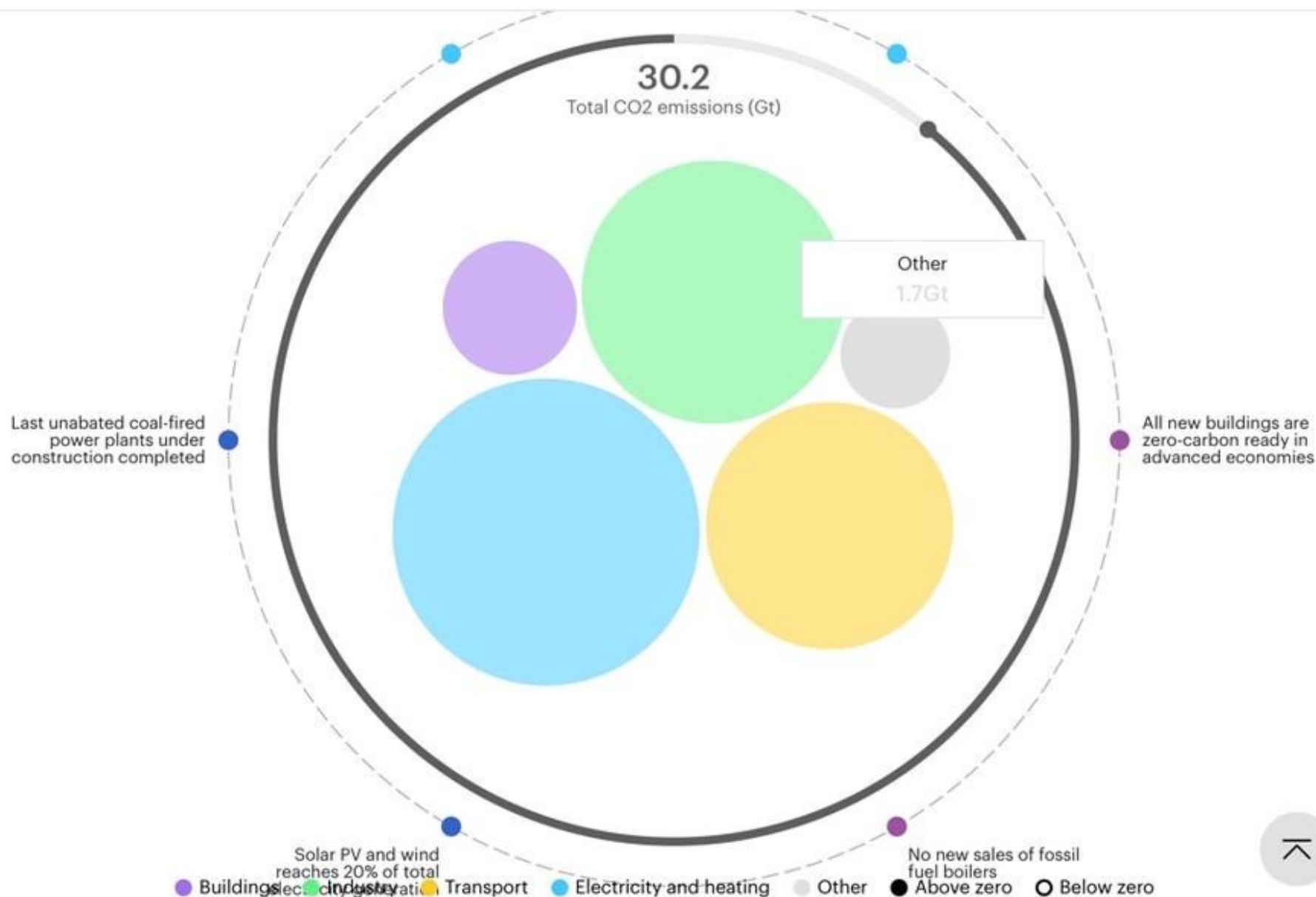
Source: Ember's Global Electricity Review 2022. IEA Net Zero by 2050 Report.

## A surge in clean energy investment can bring jobs and growth

To reach net zero emissions by 2050, annual clean energy investment worldwide will need to more than triple by 2030 to around \$4 trillion.

This will create millions of new jobs, significantly lift global economic growth, and achieve universal access to electricity and clean cooking worldwide by the end of the decade.

Lähde: IEA



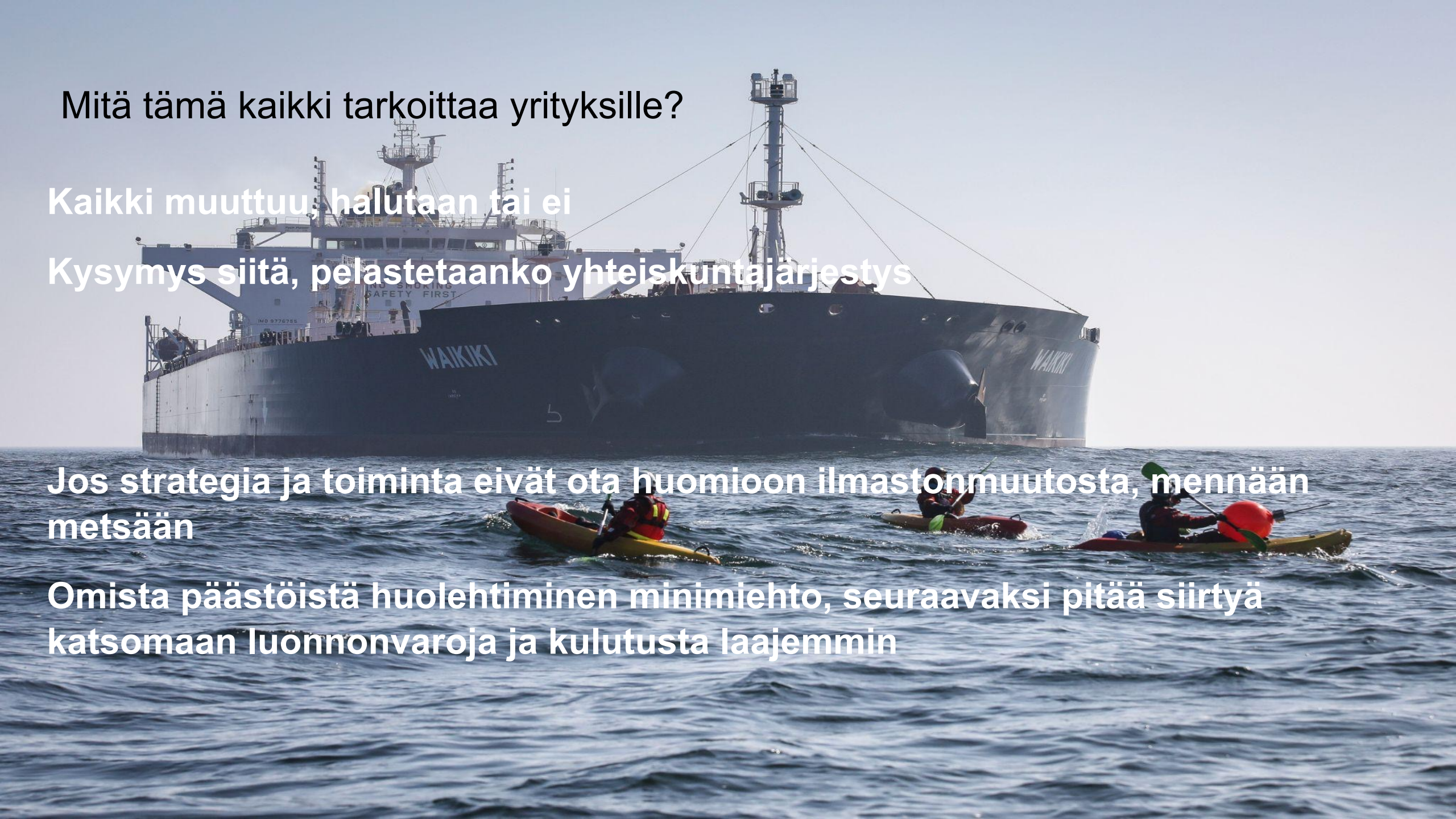
Mitä tämä kaikki tarkoittaa yrityksille?

Kaikki muuttuu, halutaan tai ei

Kysymys siitä, pelastetaanko yhteiskuntajärjestys

Jos strategia ja toiminta eivät ota huomioon ilmastonmuutosta, mennään metsään

Omista päästöistä huolehtiminen minimiehto, seuraavaksi pitää siirtyä katsomaan luonnonvaroja ja kulutusta laajemmin



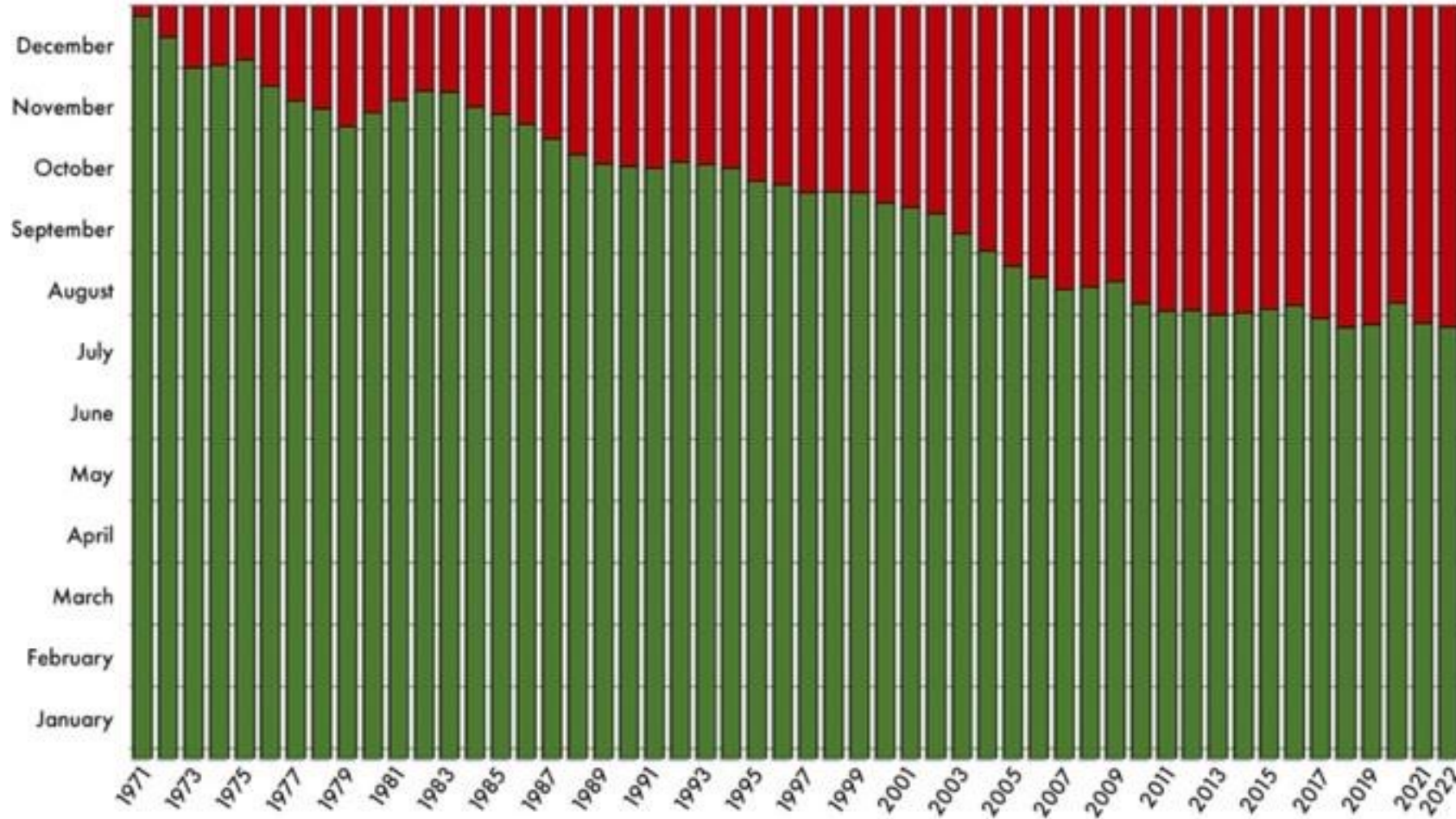


1 Earth

# Earth Overshoot Day 1971 - 2022



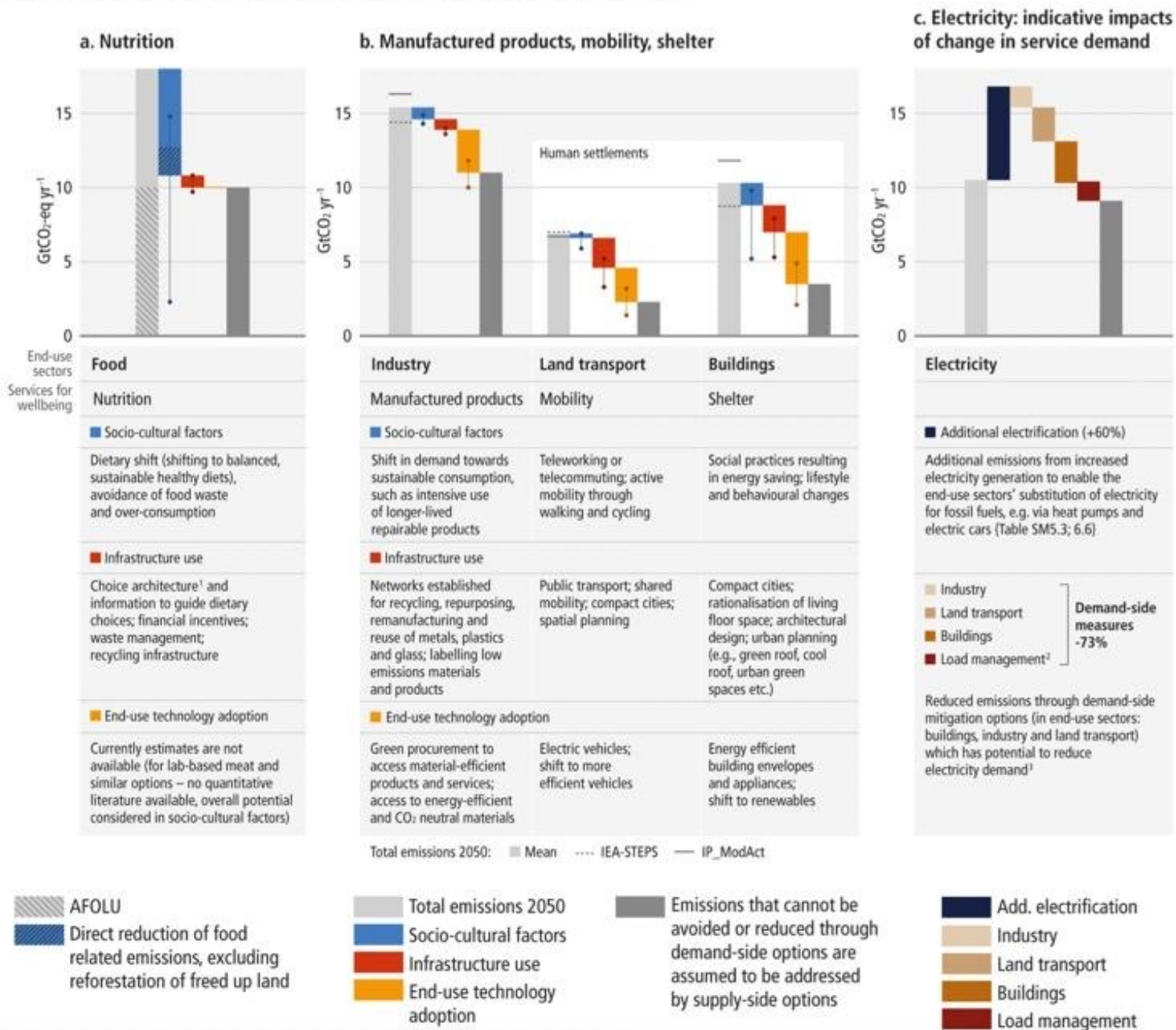
1.75 Earths



Source: National Footprint and Biocapacity Accounts 2022 Edition  
data.footprintnetwork.org



# Demand-side mitigation can be achieved through changes in socio-cultural factors, infrastructure design and use, and end-use technology adoption by 2050.



# STUDY PROVES GREENWASHING

# 67%

of fossil fuel, car and  
airline social media  
posts are greenwashing



Turkish Airlines @TurkishAirlines



We are flying for a sustainable future with our renewed boarding pass!

You can also contribute to a cleaner world by using a mobile boarding pass instead of a printed ticket on your flights.

#TurkishAirlines #ZeroWaste



Verkkosivu

Contribute to a better environment with our mobile boarding pass

# Sales of cigarettes per adult per day, 1900 to 2014

Figures include manufactured cigarettes, as well as estimated number of hand-rolled cigarettes, per adult (ages 15+) per day.

